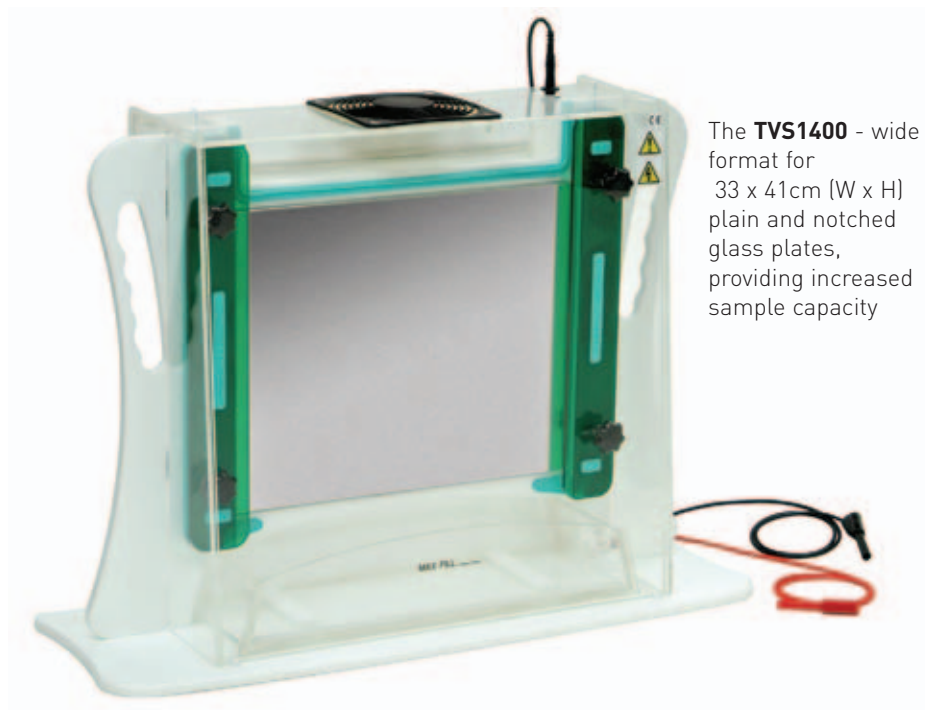


BENEFITS INCLUDE

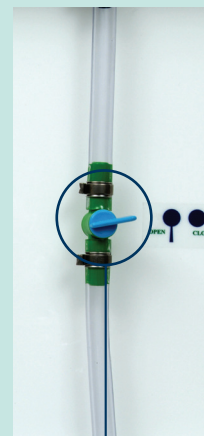
- **Safety lid** - although light weight and easily detachable, the lid cannot be removed during electrophoresis without breaking the electrical circuit
- **Ventilation grille** - aids heat dispersal during electrophoresis and can be replaced by the optional thermostatic fan kit (see FHS-KIT)
- **High voltage power cables** - oriented asymmetrically for correct polar orientation - with 2mm shrouded output connectors that are universally compatible with modern high voltage power supplies
- **Safety handles** - complimented by a new streamlined and light weight design - allow easy transportation around the lab
- **Spring-loaded plate clamps** - act in conjunction with counterbalanced silicone gaskets to maintain uniform gel thickness and even distribution of pressure across the 4mm thick float glass plates
- **Aluminium back plate** - serves as a heat sink to prevent sample distortion and 'smiling'
- **Lower buffer chamber** - clips directly onto the anode and can also be used to drain buffer from the upper chamber
- **Optional FHS-KIT** - an adjustable, thermostatically controlled fan kit powered independently to maintain gel temperature
- **Melinex combs and spacers** - 0.25 and 0.35mm thick - precision machined for maximum loading accuracy and optimum band resolution



The **TVS1400** - wide format for 33 x 41cm (W x H) plain and notched glass plates, providing increased sample capacity

The TVS1400 Single-Plate Large Format Vertical Gel Electrophoresis Unit

The Scie-Plas single-plate large format vertical gel electrophoresis unit is ideal for high-resolution techniques, such as DNA sequencing, DNase and RNase footprinting, and heteroduplex and oligonucleotide analysis, which require longer separation distances.



Drainage tap -
allows the upper
buffer chamber
to be emptied
safely and easily

TECHNICAL SPECIFICATION

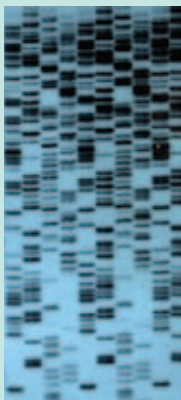
TVS1400

Unit Dimensions (W x D x H)	63 x 21.5 x 50cm	
Plate Dimensions (W x H x T)	33 x 41 x 0.4cm	
Standard Spacer Dimensions (W x H x T)	10 x 410 x 0.35mm	
Active Gel Dimensions (W x H)	29 x 38.5cm	
Maximum Sample Capacity	1 x 96	
Recommended Buffer Volume	Upper Buffer Chamber	1200ml
	Lower Buffer Chamber	1200ml
Recommended Running Conditions for 6% Denaturing PAGE Gel Using Passive Ventilation at 20°C Ambient Temperature	Power	45 - 55W
	Gel Temperature	50 - 60°C
Recommended Running Conditions for 6% Denaturing PAGE Gel Using FHS-KIT at 20°C Ambient Temperature	Power	75W
	Gel Temperature	55°C
Power Output Connectors (diameter)	Shrouded, 2mm	
Recommended Power Supplies	Consort EV232 & EV233	

Vertical Gel Units

TECHNICAL SPECIFICATION

	FHS-KIT
Unit Dimensions (W x D x H)	9.6 x 14 x 8cm
Temperature Control Range	0 - 100°C
Temperature Control Accuracy	+/-2%
Fan Dimensions (W x D x H)	12 x 12 x 3.8cm
Fan Operating Speed	2700rpm
Flow Rate	>84CFM
Noise Rating	36 dBA



An autoradiograph of a 0.35mm 6% sequencing gel run in 1.75h on a TVS1400 single-plate vertical gel electrophoresis unit, at 75W constant power with the gel temperature maintained at 55°C using the FHS-KIT. Further details on operation of the TVS1400 units can be found in our Technical Manual available from sales@scie-plas.co.uk.



**ELECTROPHORESIS
CHEMICALS
SEE PAGES 117-123**

DO YOU NEED...?

GEL DRYERS
VACUUM PUMP
A POWER SUPPLY
ACRYLAMIDE

SEE PAGE 73
SEE PAGE 75
SEE PAGES 91-92
SEE PAGE 118

Optional FHS-KIT

- Comprises a fan operated by a heat sensor temperature control unit
- Gel temperature is set by manual adjustment of the dial on the front panel of the control unit
- Fan is screwed onto the lid of the TVS1400 in place of the ventilation grille
- Fan is activated within 4°C of the preset temperature
- Separations performed in less than 2 hours at 55°C at 75W constant power



ORDERING INFORMATION

Complete System

Single-plate vertical gel electrophoresis unit with integral GRM and aluminium back plate; upper and lower buffer chambers; lid, 2 x (33 x 41cm; W x H) plain glass plates, 2 x (33 x 41cm) notched glass plates, 2 x 0.35mm melinex spacers and 1 x 0.35mm thick 48-sample shark's tooth melinex comb

Part No.

TVS1400

Replacement Parts & Accessories

2 x (33 x 41cm) plain glass plates for TVS1400	TVS1400-PG
2 x (33 x 41cm) notched glass plates for TVS1400	TVS1400-NG
2 x 0.35mm thick spacers for TVS1400	TVS1400-S0.35
Fan sensor kit including heat sensor temperature control unit, fan and mains power lead for TVS1400 (220-240Va.c.)	FHS-KIT
Fan sensor kit including heat sensor temperature control unit, fan and mains power lead for TVS1400 (100-110Va.c.)	FHS-KIT-A
2 x 0.2mm thick, platinum electrode wire for TVS1400	PT-0.2
2 x 1 metre power leads with shrouded 2mm power output connectors TVS1400	CABLE-2

TVS1400 Combs

Part No.	Thickness (mm)	Sample Throughput	Tooth Width (mm)	Tooth Height (mm)	Max. Spacing (mm)	Sample Volume / Well (µl)
TVS1400-C0.35-40	0.35	40	4	5	3	7
*TVS1400-C0.35-60MC	0.35	60	2	5	2.5	3.5

Shark's Tooth Combs

TVS1400-SC-M0.35-48	0.35	24	3	10	2.8	5
*TVS1400-SC-M0.35-60MC	0.35	60	2.5	10	5.6	4
TVS1400-SC-M0.35-96	0.35	96	2.5	9	4.5	3.5

*Multi-channel compatible